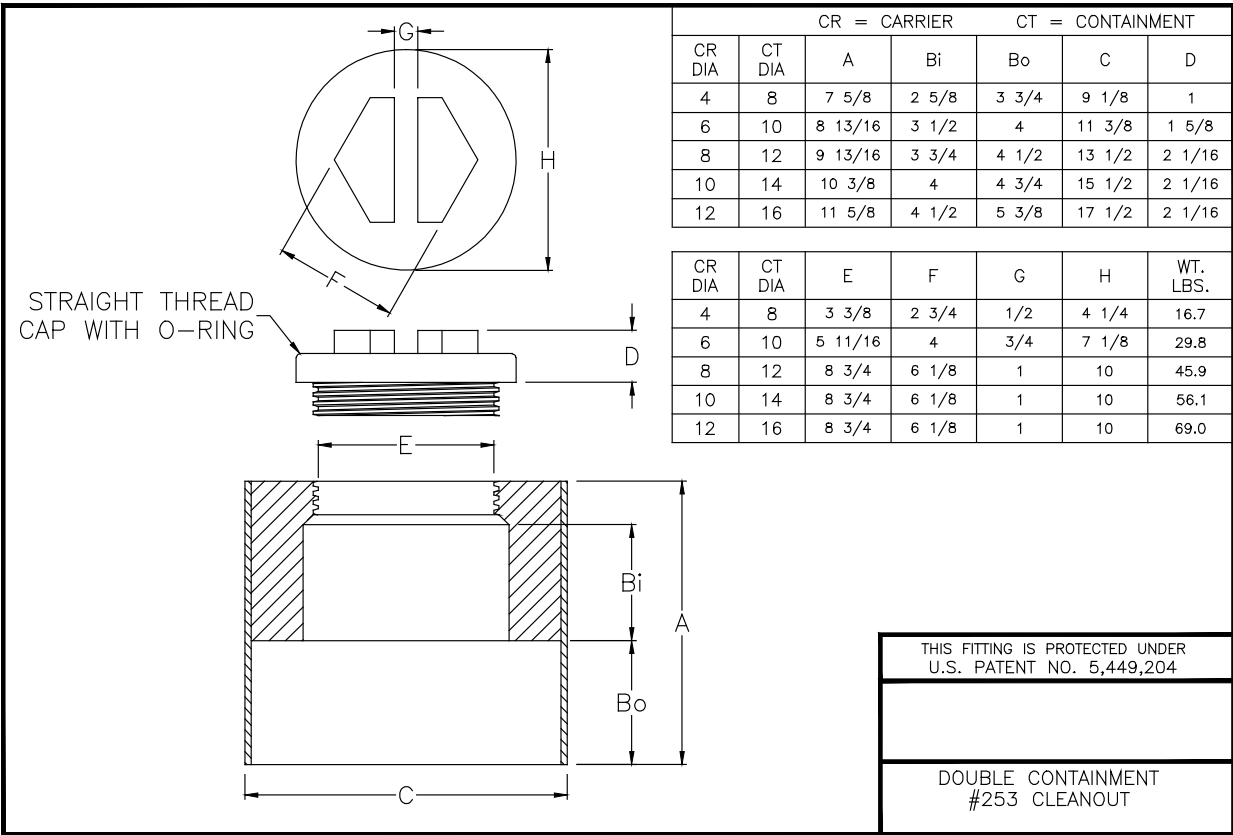


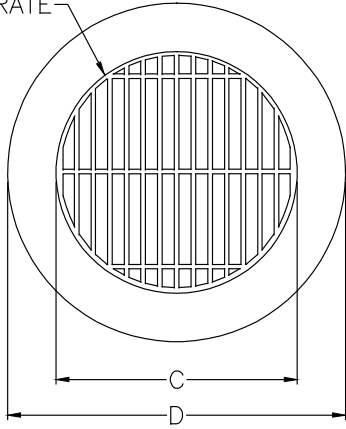
SPECIFICATION DRAWING
#155 P-TRAP



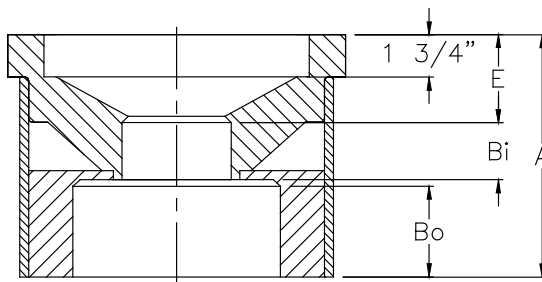
THIS FITTING IS PROTECTED UNDER
U.S. PATENT NO. 5,449,204

DOUBLE CONTAINMENT
#253 CLEANOUT

FRP GRATE



CR DIA	CT DIA	A	Bi	Bo	C
3	6	9 13/16	2	3 1/2	10
4	8	10 1/16	2 3/8	3 3/4	10
6	10	10 3/8	3 1/2	4	10
8	12	12 7/8	3 3/4	4 1/2	12
10	14	16 1/8	4	4 3/4	13 1/2
12	16	13 7/8	4 1/2	5 3/8	18 7/8



CR DIA	CT DIA	D	E	WT. LBS.
3	6	14	4	34.9
4	8	14	3 5/8	37.8
6	10	14	2 1/2	38.6
8	12	16	4 1/16	60.6
10	14	20	6 7/8	95.0
12	16	22 7/8	3 1/2	100.0

NOTE: CONTACT CONLEY CORPORATION FOR GRATE LOAD RATINGS. STAINLESS STEEL OR OTHER GRATE MATERIALS AVAILABLE.

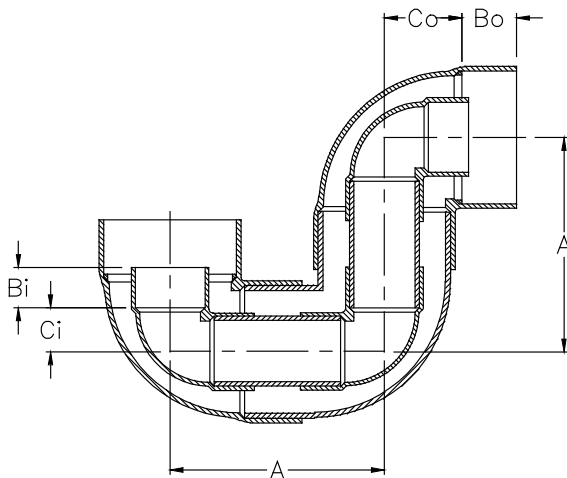
THIS FITTING IS PROTECTED UNDER U.S. PATENT NO. 5,449,204

DOUBLE CONTAINMENT #254 FLOOR DRAIN

CR = CARRIER CT = CONTAINMENT

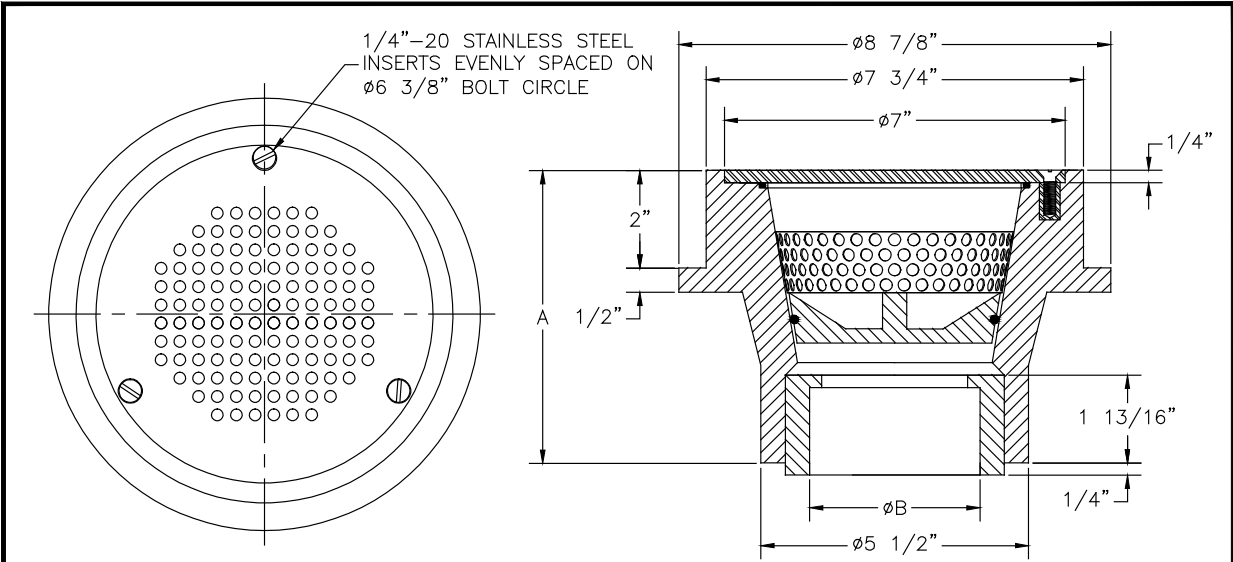
CR DIA	CT DIA	A	Bi	Bo	Ci	Co	WT. LBS.
3	6	12	2	3 5/16	2 1/4	4 1/4	43.6
4	8	14	2 5/8	3 1/4	3	5 5/8	71.6
6	10	16 3/4	3 1/2	3 1/2	4 1/8	6 7/8	111.2
8	12	20 1/4	3 3/4	3 15/16	5 1/8	8 7/8	165.0
10	14	25 1/2	4	4 3/4	6 3/8	10 3/8	227.7
* 12	16	31 7/8	4 1/2	5 3/8	8 1/4	12 3/4	297.0

* CONTAINMENT MITER CONSTRUCTION



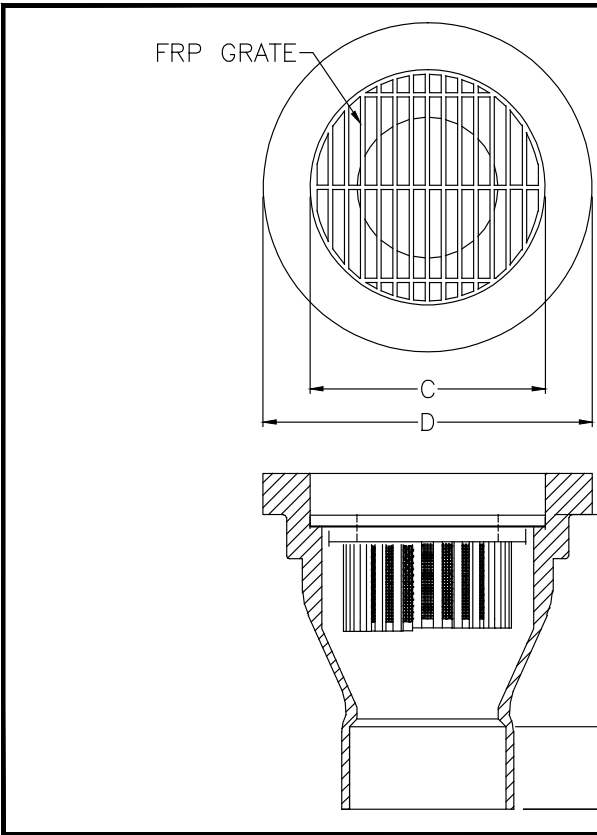
THIS FITTING IS PROTECTED UNDER U.S. PATENT NO. 5,449,204

DOUBLE CONTAINMENT #255 P-TRAP



SIZE IN.	A	B	WT. LBS.
6 X 2	6 1/4	2 3/16	9.5
6 X 3	6 1/4	3 5/16	9.5
6 X 4	6	4 5/16	9.5

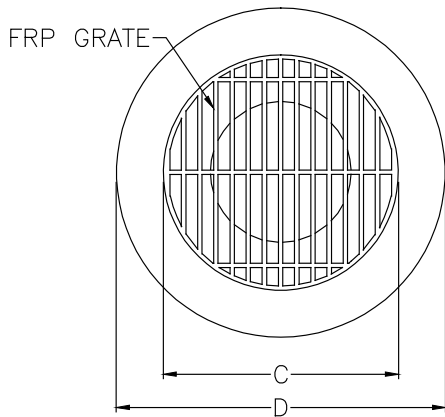
SPECIFICATION DRAWING
SEALABLE FLOOR AND
EQUIPMENT DRAIN



SIZE IN.	A	B	C	D	WT. LBS.
4	14	2 5/8	10	14	29.5
6	14	3 1/2	10	14	30.0

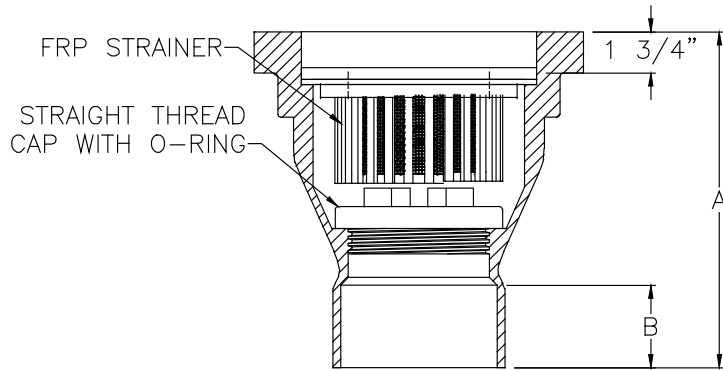
NOTE: CONTACT CONLEY CORPORATION FOR GRATE LOAD RATINGS. STAINLESS STEEL OR OTHER GRATE MATERIALS AVAILABLE.

SPECIFICATION DRAWING
FLOOR DRAIN WITH STRAINER



SIZE IN.	A	B	C	D	WT. LBS.
4	14	2 5/8	10	14	35.0
6	14	3 1/2	10	14	35.5

NOTE: CONTACT CONLEY CORPORATION FOR GRATE LOAD RATINGS. STAINLESS STEEL OR OTHER GRATE MATERIALS AVAILABLE.



SPECIFICATION DRAWING
SANITARY FLOOR DRAIN





ISO 9001:2008
CERTIFIED
Conley
Composites Tulsa,
Oklahoma USA

This product data sheet and recommendations it contains are based on data reasonably believed to be reliable. It is intended that this data be used by competent personnel having acceptable training in accordance with current industry practice and operating conditions. Variation in environment, application or installation, changes in operating procedures, or extrapolation of data may cause unsatisfactory results. Conley Corporation makes no representation or warranty, express or implied, including warranties of merchantability or fitness for purpose, as to accuracy, adequacy or completeness of the recommendations or information contained herein. Conley Corporation assumes no liability whatsoever in connection with this literature or the information or recommendations it contains.



2795 East 91st Street
Tulsa, Oklahoma 74137 USA
Phone: 1 (918) 299-5051
Fax: 1 (918) 299-5907
www.conleyfrp.com
E-Mail: sales@conleyfrp.com